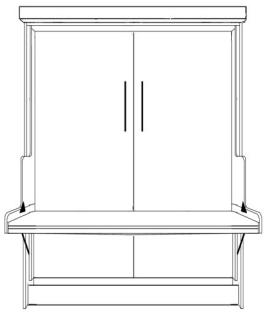
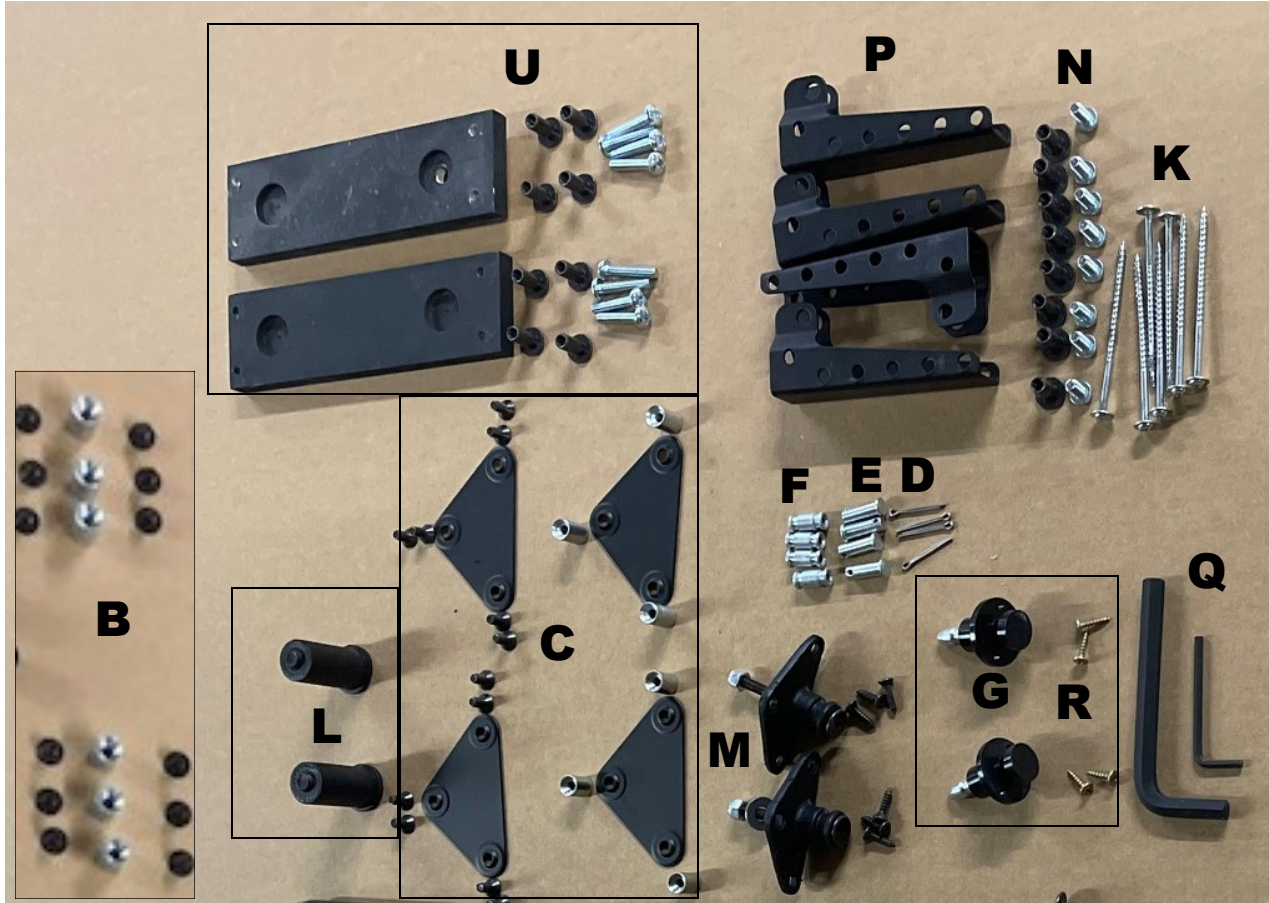


# DVB50, EVB50, IVB50, PVB50, RVB50, VVB50 Vertical Desk Bed-INSTALLATION GUIDE

TO OPERATE AN OFFICE BED IT REQUIRES THE ABILITY TO LIFT 50 LBS (DEPENDING ON THE WEIGHT OF THE MATTRESS)



- A** (2) ARMS WITH 4 PISTONS
- B** HINGE BOLTS AND SLEEVES
- C** 2 SETS LINK PIVOT PLATES
- D** 4 CLEVIS PINS
- E** CLEVIS PINS
- F** 4 PISTON CONNECTORS
- G** (2) BLACK LOCKS & SCREWS
- H** MACHINE BOLTS
- I** CONFIRMAT
- J** T NUTS
- K** WOOD SCREWS
- L** TRUNION SLEEVES AND BOLTS
- M** (2) TRI-BEARER
- N** LOWER BRACKET SCREWS
- P** (4) LOWER PISTON BRACKETS
- Q** 4MM + 10MM ALLEN WRENCH
- R** LOCK SCREWS
- T** 2 SWING LEGS BOLTS & T NUTS
- U** (2) WOOD BLOCKS
- (8) T NUTS & (8) 1.25" BOLTS



**WARNING!** ALL PISTONS CONTAIN STORED ENERGY. FAILURE TO FOLLOW THESE INSTRUCTIONS COULD RESULT IN DAMAGE TO THE PRODUCT, PERSONAL INJURY OR DEATH.. PLEASE CALL 916-607-7728 WITH ANY QUESTIONS.

# **1. CABINET ASSEMBLY**

Attach the arm (A) to the cabinet sides using T nuts (J) and machine bolts (H). Then attach the lower piston brackets (P) using T nuts and bolts (O). Connect the pistons to the lower piston brackets (B) using clevis pins and cotter pins (E).



**ATTACH THE TOP TO THE TWO SIDES using machine bolts (F).**



**Attach the lower back brace to each side using the confirmat screws (I)**



## CABINET ASSEMBLY Continued

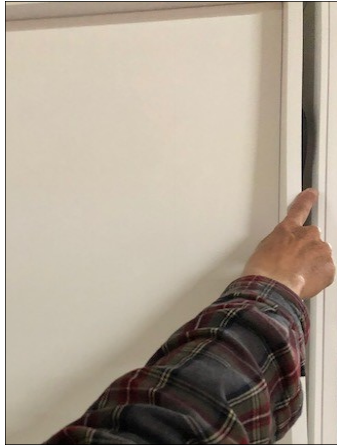
**STAND UP ASSEMBLED CABINET** Be sure that the cabinet is perfectly square on the wall (shown below). Visually check the alignment of the mattress tray and cabinet by looking at the narrow space between the mattress tray and sides. To correct alignment, just nudge the base of the cabinet slightly to either side. When alignment is correct, hold the bed open, reach in underneath, and drive a 2 ½" screw through the frame backrail into the wall. This will keep the cabinet from shifting offline with use. Using the 3-3/12" wood screws, attach the cabinet to 3 wood studs in the wall at the top. Also attach the safety cable into a wooden wall stud.



**Attach the headboard using 4 confirmat bolts (I).**



## 2-ATTACH CABINET TO WALL



There needs to be an even gap on both sides, between the cabinet side and the tray, for the metal leg to not rub on cabinet side.

**INSTALL SAFETY CABLE**-Locate the stud closest to the center of the bed, and attach one end of the cable to the back rail near the stud with the ¾" screw provided. Leaving about a three inch loop in the cable as shown, attach the other end to the wall stud with the 2" washer head screw about one inch higher than the rail top.



**WARNING!! Your Wallbed! MUST be anchored to wood studs or other structural members to prevent damage or injury. If you are working with sheet metal studs, cinder block, brick, or concrete, you must provide three anchor points of 100 pounds strength each, before installing a Wallbed!. DO NOT anchor to sheetrock or panelling!**

### 3. ASSEMBLE THE TRAY

Attach the tray wings to the tray.

Attach each tray wing to the back of the tray using bolts. The back of the tray is identified because it is a taller piece

FRONT



TRAY WINGS

BACK

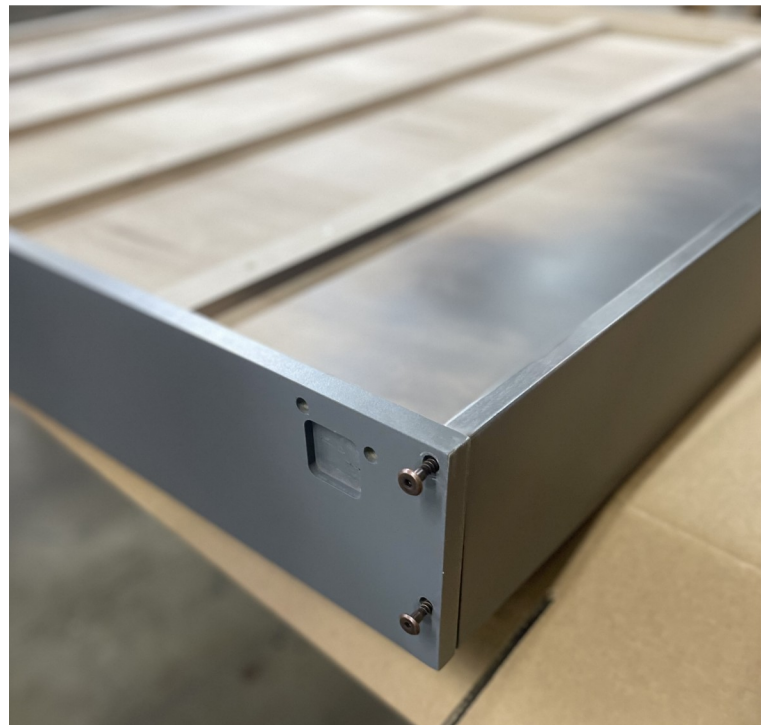


be sure that the thick part of the nylon sleeve is facing inward



HEAD OF TRAY

FOOT OF TRAY



## 4 INSTALL THE DESK

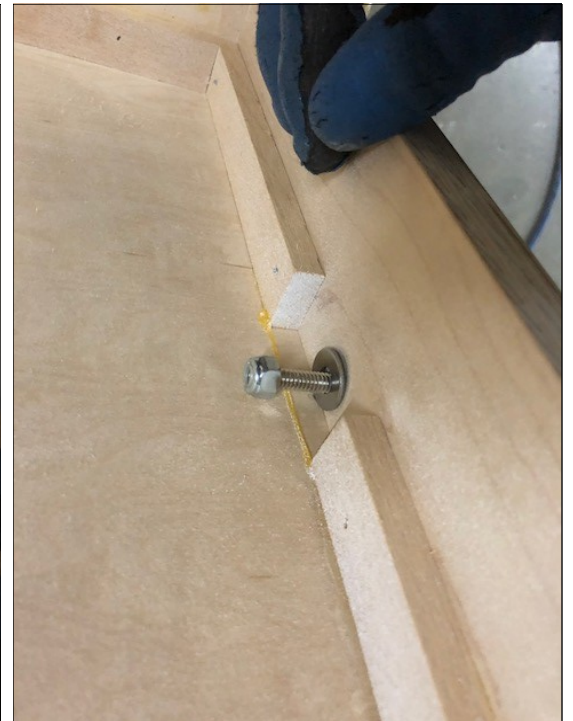
**ATTACH DESK TO TRAY-** With the tray resting on the ground, mattress side facing down stand the desk up into the tray as shown. Connect the desk to the tray using ( C )



### INSTALLING THE LINK PIVOT PLATES ( C )



## 5. INSTALL DESK BEARER ( M ) using bolt, washer and lock nut only. Caution DO NOT use wood screws for this step!



## 6. INSTALL TRAY INTO CABINET

Flip the desk and tray over as shown.  
Slide it into the cabinet.



TRUNION

## 7. CONNECT TRAY TO CABINET- TRUNION Using trunion sleeve and 10mm bolt (N) using 10 mm allen wrench (Q) Tighten bolt to arms.

**Caution-** before attaching bolt be sure that the lip of the red nylon sleeve is facing towards the mattress.



**CAUTION-** Use caution when attaching this bolt Do not cross thread it.



**8 CAREFULLY STAND UP THE BED TRAY AND INSERT IT INTO THE CABINET.**



**9 ATTACHING THE ARM**

One person needs to hold the bed shut while the second person pulls back the arm hook into the desk bearer assembly on the desk.

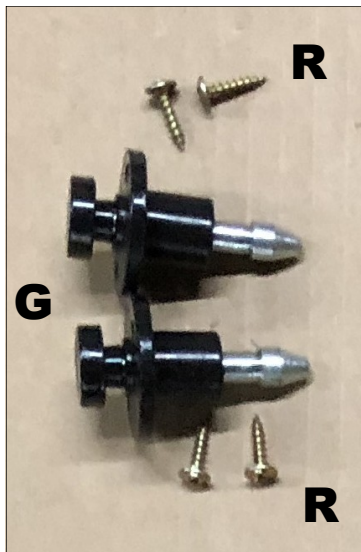


## 10. FINISHING STEPS

Install oval head wood screws (K) into the

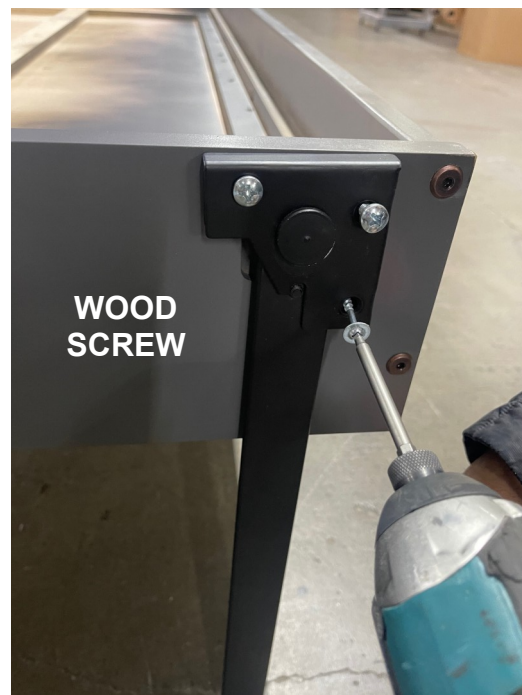
### INSTALL LOCKS

Install the locks(G) using the lock Screws (R.)



### ATTACH THE SUPPORT LEGS ( T )

using 2 silver flat head machine screws and black T nuts.  
Use wood screw in the bottom hole as shown at right. .



### ATTACH DECORATIVE HANDLES

Using the screws provided.



INSTALL THE CARDBOARD LINER BOARD  
INTO THE MATTRESS TRAY-  
Using the screws provided.





## **BEFORE OPERATING**

BED MUST BE SECURELY ATTACHED INTO 3 WOOD STUDS AT THE TOP AND THE MATTRESS MUST BE SECURELY BUCKLED INTO THE BED TRAY. PILLOWS MUST BE REMOVED.

CLEAR AWAY ITEMS ON THE FLOOR UNDER THE DESKTOP. REMOVE FROM THE DESK ITEMS TALLER THAN 14" ON THE VERTICAL MODEL AND 16" ON THE HORIZONTAL MODEL

## **UNLOCK THE BED**

ON BOTH SIDES OF THE DESK AT THE TOP OF THE DESK ENDS THERE ARE PLUNGER LOCKS. PULL THE LOCKS TO RELEASE THE BED.

## **TO OPEN THE BED**

STANDING IN FRONT OF THE BED, PULL ON THE HANDLE WHILE PUSHING DOWN ON THE DESKTOP. ONCE THE BED STARTS TO OPEN THE PISTONS WILL ASSIST IN LOWERING THE BED.

## **CARE**

To care for your furniture-just wipe with a soft damp cloth and then dry the surface immediately. All wood is susceptible to scratches and dings so use coasters and pads to protect your furniture.

## **DO NOT SIT OR STAND ON DESK** **DESK DOES NOT FOLD UP**

LIFTING UP THE DESKTOP AND SITTING OR STANDING ON THE DESKTOP WILL BEND THE MECHANISM AND BREAK THE BED.

**THIS IS NOT COVERED UNDER THE WARRANTY.**



## **REMOVE ITEMS UNDER DESKTOP BEFORE YOU LOWER THE BED**

ITEMS UNDER THE DESKTOP WILL BE DAMAGED WHEN YOU LOWER THE BED AND YOU WILL BEND THE MECHANISM MAKING THE BED INOPERABLE.

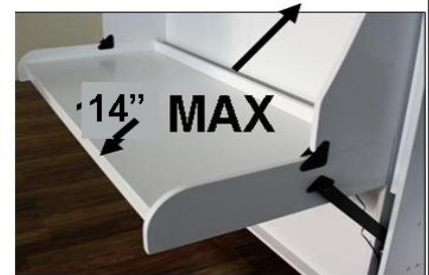
**THIS IS NOT COVERED UNDER THE WARRANTY.**



## **REMOVE ITEMS OVER 14" FROM DESK**

ITEMS TALLER THAN 14" ON THE VERTICAL MODEL AND 16" ON THE HORIZONTAL MODEL WILL BE DAMAGED WHEN YOU LOWER THE BED. LEAVING TALL ITEMS ON THE DESK CAN BEND THE MECHANISM MAKING THE BED INOPERABLE.

**NOT COVERED UNDER THE WARRANTY.**



FAILURE TO FOLLOW THESE DIRECTIONS WILL **VOID THE WARRANTY**

**WARNING!!** *Your Wallbed! MUST be anchored to wood studs or other structural members to prevent damage or injury. If you are working with sheet metal studs, cinder block, brick, or concrete, you must provide three anchor points of 100 pounds strength each, before installing a Wallbed!. DO NOT anchor to sheetrock or panelling!*

## **INSERT MATTRESS:**

Hold the bed open, slide your mattress in place, and wrap and buckle the retainer strap at the foot. This retainer is designed to lie under linens and not interfere with use of the bed. Any excess strapping may be tucked under the mattress. You **MUST** use this strap to retain the mattress in place. Without this strap, the mattress may fall out of the tray to the floor when closed, preventing the bed from opening.

